

IN PARTNERSHIP WITH:



NEXT ED NEXT ED NEXT ED NEXT ED NEXT ED
NEXT ED NEXT ED NEXT ED NEXT ED NEXT ED
NEXT ED NEXT ED NEXT ED NEXT ED NEXT ED
NEXT ED NEXT ED NEXT ED NEXT ED NEXT ED

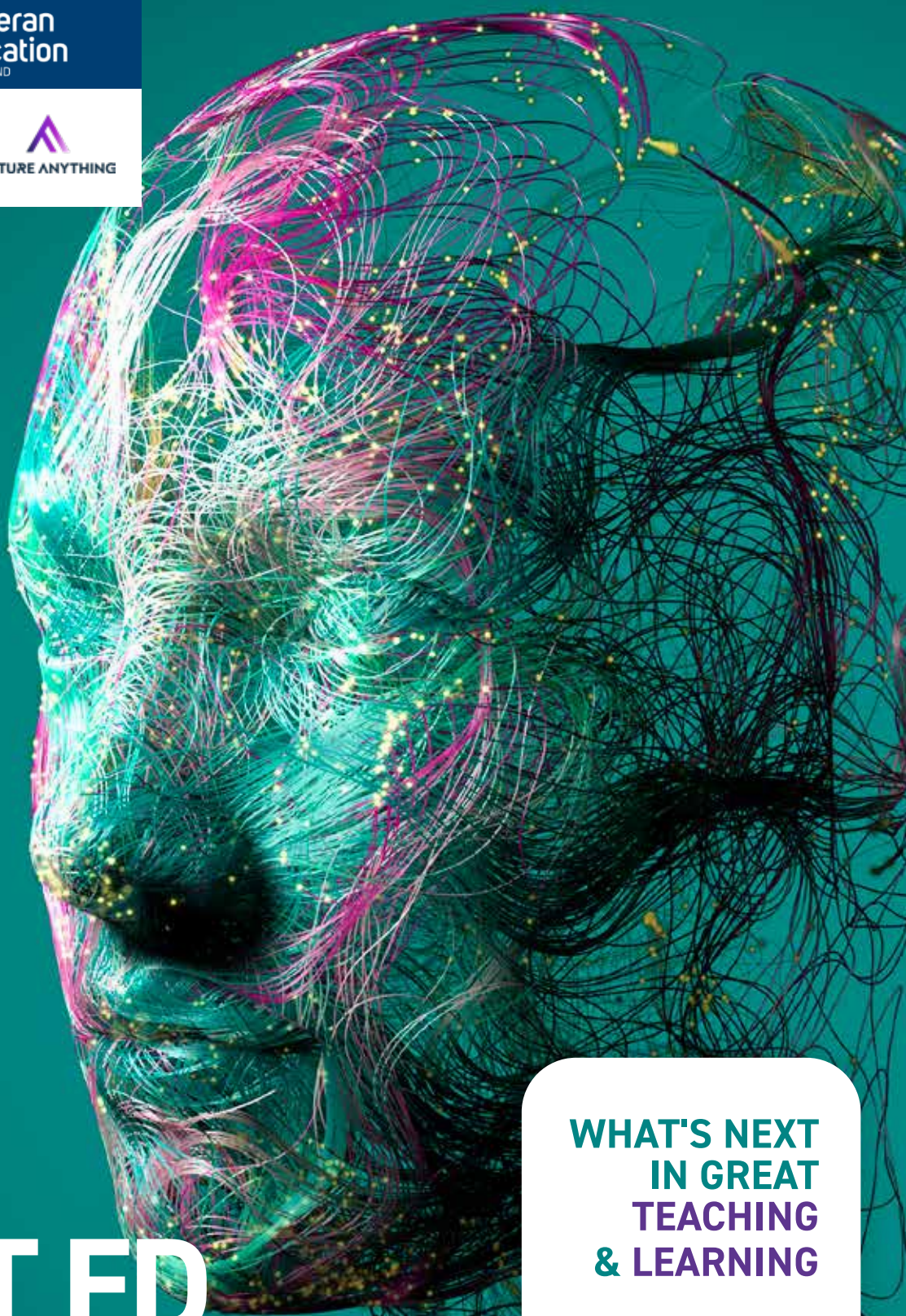
NEXT ED CONFERENCE

4 KEYNOTES, 2 TOURS, 4 WORKSHOP STREAMS,
TEACHMEET & PRINCIPAL PANEL

WHAT'S NEXT
IN GREAT
TEACHING
& LEARNING

25
JUNE

IMMANUEL
LUTHERAN
COLLEGE
BUDERIM



Schedule

8:00 - 8:45	REGISTRATION/ NETWORKING
8:45 - 9:00	CONFERENCE OPENING
9:00 - 9:45	KEYNOTE 1 JAN OWEN AM
9:45 - 10:45	STREAM A • WORKSHOPS
10:45 - 11:15	MORNING TEA
11:15 - 12:00	KEYNOTE 2 DR. BRENDA HEYWORTH
12:00 - 1:00	STREAM B • INTERACTIVE KEYNOTE 3 (DR MATT CAPP) • WORKSHOPS • SUNSHINE COAST TOUR STARTS (1:00 - 3:00 PM)
1:00 - 1:45	LUNCH
1:45 - 2:45	STREAM C • KEYNOTE 4 NATHAN WALLIS (VIRTUAL) • PRINCIPAL PANEL
2:45 - 3:30	STREAM D • SCHOOLS AROUND THE WORLD (VIRTUAL TOUR) • TEACHMEET
3:30 - 3:45	CLOSING REMARKS LUCKY DOOR PRIZE
3:45 - 4:30	NETWORKING & REFRESMENTS

2

**WHAT'S NEXT
IN GREAT
TEACHING &
LEARNING**

25
JUNE

**4 KEYNOTES, 2 TOURS, 4 WORKSHOP
STREAMS, TEACHMEET & PRINCIPAL PANEL**

**REGISTER
HERE NOW!**



Your Hosts

CONFERENCE ORGANISERS



Nicole Dyson
CEO/Founder

Future
Anything



Eloise Beveridge
Principal

Immanuel
Lutheran College



Vanessa Noonan
*Director - Teaching
and Learning*

Lutheran Education
Queensland

Meet Our Keynote Speakers



Jan Owen AM

Former CEO of the Foundation for
Young Australians and co-chair of
Learning Creates Australia.

Topic: The Future Is Now – Preparing
Students for a World That Doesn't
Exist Yet



Dr Brenda Heyworth

Educator, psychiatrist,
author, and founder of
'It's a Jungle'.

Topic: Making Sense of
Big Emotions in Schools



Dr Matt Capp

Director of CAPITALISE
Education, teacher, lecturer.

Topic: Who's Creating the Learning
Barrier? Student or Teacher?



Nathan Wallis (Virtual)

Neuroscience educator,
teacher, parent and
TV host.

Topic: Activating Students' Executive
Functions and Higher Intelligence

3

WHAT'S NEXT IN GREAT TEACHING & LEARNING

Meet Our Virtual Principal Panel

Leaving a Legacy - Past Triumphs, Present Challenges, and What's Next for Education.



Nicole Dyson
CEO/Founder

Future Anything

Join Nicole Dyson as she hosts a dynamic panel of principals, who will reflect on their leadership journeys and the lasting legacies they've left within their school communities. They will discuss the triumphs that shaped their careers, the challenges schools face today, and their visions for the future of education.

4



Peter Hutton

Executive Director of
Global Village Learning



Stephen Harris

Chief Learning Officer -
Learnlife



Briony Scott

Former Principal
of Wenona School

**WHAT'S NEXT
IN GREAT
TEACHING &
LEARNING**

25
JUNE

**4 KEYNOTES, 2 TOURS, 4 WORKSHOP
STREAMS, TEACHMEET & PRINCIPAL PANEL**

**REGISTER
HERE NOW!**



Workshop Facilitators



Vanessa Bermingham

St Laurence's College

Future Focus – Skill Development Through Project-Based Learning



Dan Dempsey

Future Anything

Building Capabilities in the Classroom



Tania Russell

Faith Lutheran College, Redlands

Authentic Learning in the Middle Years.



Pip Cleaves

Global Village Learning

The Hardest Working Member of Your Team - A true story about AI in a learning community



Paul Drewniak

Your Guides on the Side

Leveling Up Leadership - Explore how research-based professional learning can enhance your leadership



Victoria Snell

Southern Cross Catholic College

Ethical Use of Multimodal AI in Teaching English and Literacy



Brett Cruse

Immanuel Lutheran College

Designing Curriculum for Real-World Impact



Verity Harvey

Immanuel Lutheran College

Neurodivergence and Inclusive Education Considerations for the 21st Century



Kari Sutton

Mentally Fit Generation

Mental Fitness Toolkit for Staff and Students



Brett Dascombe

Wavell State High School

The Power of the Middle – Authentic Learning in the Middle Years



Jo Muirhead

Wasserman

Canva Classroom Creativity using AI



Rebecca Woolnough

SMART Technologies

Cultivating Inclusive Learning Through Neurodiversity and Digital Inclusion

STREAM A

TITLE	PRESENTER	DESCRIPTION	PRIMARY	SECONDARY
LEVELING UP LEADERSHIP	PAUL DREWNIAK YOUR GUIDES ON THE SIDE	Learn how coaching and mentoring can transform school leadership. This session explores research-based strategies for developing leadership capacity, resilience, and decision-making. Participants can engage in live coaching demonstrations or interactive leadership discussions.	↙	↙
CANVA CLASSROOM CREATIVITY USING AI	JO MUIRHEAD WASSERMAN	Learn how Canva's AI tools can enhance teaching, creativity, and engagement. This hands-on session explores AI-powered features like Magic Studio, interactive presentations, and collaborative whiteboards, providing teachers with practical strategies and ready-to-use templates.	↙	↙
BUILDING CAPABILITIES IN THE CLASSROOM	DAN DEMPSEY FUTURE ANYTHING	Perfect for primary and secondary schools looking to build capability-rich curriculum, Building Capabilities in the Classroom supports teaching teams to build and measure 21st Century Skills (or General Capabilities, or the 6 C's, or Employability Skills, or Enterprise Skills) within the curriculum.	↙	↙
CULTIVATING INCLUSIVE LEARNING DIGITAL INCLUSION	REBECCA WOOLNOUGH SMART TECHNOLOGIES	Explore how UDL, neurodiversity, and digital inclusion can create inclusive, strengths-based classrooms. Aligned with SMART's research initiative with the University of Melbourne, discover how digital tools and environments can empower neurodiverse students and foster accessible, engaging, and collaborative learning for every student.	↙	
NEURODIVERGENCE AND INCLUSIVE EDUCATION CONSIDERATIONS	VERITY HARVEY IMMANUEL LUTHERAN COLLEGE	This session explores inclusive education, neurodiversity, and practical strategies for supporting students with diverse needs. Attendees will discuss funding models, teaching approaches, and how to collaborate with families to create truly inclusive school environments.	↙	↙

STREAM B

TITLE	PRESENTER	DESCRIPTION	PRIMARY	SECONDARY
INTERACTIVE KEYNOTE	DR MATT CAPP	In this interactive Keynote, Dr. Matt Capp will challenge educators to rethink learning barriers. Is it the students or the teaching methods that create obstacles? He'll inspire attendees to reflect on their teaching practices and discover how shifting their approach can remove barriers and unlock every student's potential.	↙	↙
SUNSHINE COAST SCHOOL TOUR	DAN DEMPSEY MATTHEW FLINDERS & SUNSHINE COAST GRAMMAR SCHOOL	Join guided tours of two leading Sunshine Coast schools—Sunshine Coast Grammar School and Matthew Flinders Anglican College—to explore their distinctive approaches to teaching and learning. At Grammar, observe students in action across spacious, nature-rich grounds designed to support wellbeing and academic growth. At Flinders, discover purpose-built facilities and a culture of excellence that fosters curiosity, creativity, and innovation.	↙	↙
THE HARDEST WORKING MEMBER OF YOUR TEAM - A TRUE STORY ABOUT AI	PIP CLEAVES GLOBAL VILLAGE LEARNING	Discover how AI acts as a digital colleague at Global Village Learning. This session explores AI's role in curriculum planning, compliance, and supporting neurodivergent learners, allowing educators to focus on meaningful student relationships.		↙
TEACHMEET - POWER OF PBL	TANIA RUSSELL FAITH LUTHERAN REDLANDS AUTHENTIC LEARNING IN THE MIDDLE YEARS	Explore strategies to create meaningful learning experiences in middle school through Inquiry-Based and Project-Based Learning, aligned with the Australian Curriculum.	↙	↙
	BRETT CRUSE IMMANUEL LUTHERAN COLLEGE DESIGNING CURRICULUM FOR REAL-WORLD IMPACT	Learn how to integrate Business, Design, and Digital Technologies into education, using practical strategies to bridge the gap between classroom learning and industry and prepare students for future careers.	↙	↙
MENTALLY FIT GENERATION	KARI SUTTON MENTALLY FIT GENERATION	Discover practical strategies to enhance mental fitness in schools. This interactive session equips educators with evidence-based tools to foster psychological safety, emotional intelligence, and resilience in both staff and students, promoting a positive and engaged learning environment.	↙	↙

STREAM C

TITLE	PRESENTER	DESCRIPTION	PRIMARY	SECONDARY
KEYNOTE	NATHAN WALLIS	Nathan Wallis, renowned neuroscience educator and host of Kids Don't Come with a Manual, will guide educators through the latest insights into how executive functions and higher intelligence are developed and nurtured in young people. Drawing from neuroscience and Indigenous worldviews, he will explore how environment, relationships, and culture influence students' capacity to learn and thrive.	⏵	⏵
VIRTUAL PRINCIPAL PANEL	NICOLE DYSON	Join Nicole Dyson as she hosts a dynamic panel featuring principals Peter Hutton (Global Learning Village), Briony Scott (formerly Wenona School), and Stephen Harris (LearnLife). Together, they will reflect on their leadership journeys and the lasting legacies they've created within their school communities. The panel will delve into the triumphs that shaped their careers, the pressing challenges schools face today, and their bold visions for the future of education.	⏵	⏵

STREAM D

TITLE	PRESENTER	DESCRIPTION	PRIMARY	SECONDARY
SCHOOLS AROUND THE WORLD	NICOLE DYSON FUTURE ANYTHING	Join Nicole Dyson for a virtual tour of schools, offering a unique opportunity to explore diverse educational practices and cultures. This session will provide insights into how schools are adapting to global challenges and fostering innovation in the classroom. Gain a broader understanding of international education, with a focus on how global perspectives are shaping the future of learning.	⏵	⏵
TEACHMEET	VANESSA BERMINGHAM ST LAURENCE'S COLLEGE	Discover how a new elective subject is equipping students with 21st-century skills through real-world exploration of the UNESCO's Sustainable Development Goals (SDGs).	⏵	⏵
	FUTURE FOCUS - SKILL DEVELOPMENT THROUGH PBL			
	BRETT DASCOMBE WAVELL STATE HIGH SCHOOL	Discover strategies for fostering meaningful learning experiences in middle school through Inquiry-Based and Project-Based Learning, aligned with the Australian Curriculum.		⏵
	THE POWER OF THE MIDDLE - AUTHENTIC LEARNING IN THE MIDDLE YEARS			
	VICTORIA SNELL SOUTHERN CROSS CATHOLIC COLLEGE	Learn how AI can enhance literacy outcomes while addressing ethical concerns in the classroom. This hands-on workshop will guide you in integrating AI tools using the Australian Framework for Generative AI in Schools, ensuring responsible and effective implementation.		⏵
	ETHICAL USE OF MULTIMODAL AI IN TEACHING ENGLISH AND LITERACY			

4 KEYNOTES, 2 TOURS, 4 WORKSHOP
STREAMS, TEACHMEET & PRINCIPAL PANEL

**REGISTER
HERE NOW!**



**WHAT'S NEXT
IN GREAT
TEACHING &
LEARNING**

25
JUNE

WHAT'S NEXT IN GREAT TEACHING & LEARNING

7

NEXT ED NEXT NEXT ED NEXT ED



invisio

EMPOWERING SCHOOLS THROUGH TECHNOLOGY INNOVATION AND SECURITY



Apps & Data



Cyber



Connectivity



Operational
Services



Platforms



Workplace



Level 3
240 Queen Street
Brisbane QLD 4000



sales@invisio.com.au



+61 (7) 3185 3953



the alpha **school** system

A School Management System made for **connections**



Now at your
fingertips



Notes:

10

**WHAT'S NEXT
IN GREAT
TEACHING &
LEARNING**

25
JUNE

**4 KEYNOTES, 2 TOURS, 4 WORKSHOP
STREAMS, TEACHMEET & PRINCIPAL PANEL**

**REGISTER
HERE NOW!**



Experience the Future of learning with **SMART Technologies**

"20% of the world's population has at least one neurodivergent condition."

Join us at the Next Ed Conference for a hands-on look at how SMART is empowering educators to restore engagement, support neurodiverse learners, and lead with innovation.

Come see how our latest tools support:

- Explicit teaching through Universal Design for Learning (UDL)
- Supporting executive functioning
- Routines and participation opportunities
- Providing digital and physical tools
- Addressing technology barriers

SMART is proud to be shaping the future of Australian education—together.

Guide to implement the 36 strategies with SMART.

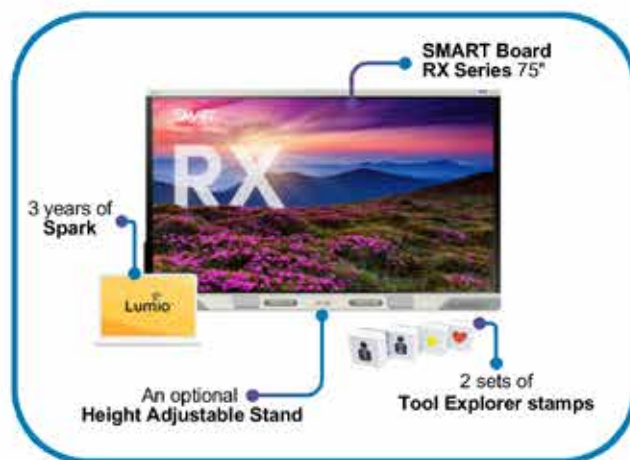


Explore how the strategies map to UDL Guidelines 3.0.



Ask about our University of Melbourne research on neurodivergent learners!

Inclusive Classroom Bundle



SCAN ME



IN PARTNERSHIP WITH:



**LOCATION AND
PARKING DETAILS:**

IMMANUEL
LUTHERAN COLLEGE

126-142 WISES RD,
BUDERIM QLD 4556
AUSTRALIA

COSTS:

\$250 FULL DAY
CONFERENCE PASS

\$1750 BUNDLE PRICE
FOR 10 TICKETS

*INCLUDING MORNING TEA,
LUNCH, AND NETWORKING

NEXT ED CONFERENCE

**WHAT'S NEXT
IN GREAT
TEACHING &
LEARNING**

25
JUNE

IMMANUEL
LUTHERAN
COLLEGE
BUDERIM

NEXT ED
NEXT ED NEXT ED NEXT ED



CALLING

ALL PRIMARY AND SECONDARY TEACHERS,
EDUCATION LEADERS & TERTIARY PROVIDERS.

**SECURE YOUR SPOT NOW
AND SELECT YOUR WORKSHOPS**



**REGISTER
HERE**